

**MasTool** 



***Professional  
Concrete Finishing  
Tools***

Various of hand tools for concrete finishing can be found from *Mastool*,  
Including Finishing Trowel, Floats, Concrete Edgers, Vee Jointer,  
Adhesive Spreaders, Screed, Straight Edge, Floor Scraper, Aluminium Bullfloats,  
Concrete Slab Finishing, Telescopic and Clip Together Handle and so on.  
Specially designed for professional purpose.



**CHOOSING *Mastool***  
**SAVING COST, TIME, RESOURCE...**  
**CONTRIBUTING TO ENVIRONMENT**

# FINISHING TROWEL

Concrete finishing trowels are used in finishing the surface of the concrete to the required smoothness. Troweling represents the last stage in the finishing process. This action helps compact the surface and adds to the quality and durability of the job. Finishing trowels are narrower and longer than plastering trowels and the blade is slightly convex.

All **Mastool** concrete finishing trowels are available with special designed handle, which are resilient comfort grips which reduce fatigue.

## POINTED TROWEL



Part No.	Blade Size	Gauge
H101	120x365mm	Light
H101S	120x365mm	Light
H103	120x365mm	Heavy
H109	100x355mm	Light
H109S	100x355mm	Light
H165	115x600mm	Light
H191	115x405mm	Light
H191S	115x405mm	Light
H192	115x450mm	Light
H193	115x500mm	Light

S=Stainless Steel

### Features

- Made from the highest grade spring steel, properly shaped and tempered
- Special designed handle provides a soft feel, reduces fatigue, and offers excellent durability
- Aluminum alloy mounting is lightweight but very strong

## SQUARE TROWEL



Part No.	Blade Size	Gauge
H102	280x120mm	Light
H102S	280x120mm	Light
H162	280x120mm	Heavy
H181	115x405mm	Light
H181S	115x405mm	Light

S=Stainless Steel

## STEEL MARBLE SHEEN TROWEL



Part No.	Blade Length
H120	300mm
H121	350mm
H122	450mm
H126	555mm

# FLOATS



Floats are made of aluminum, magnesium and wood, available with special designed handle, which are resilient comfort grips which reduce fatigue. The most popular with concrete finishers are wood and magnesium. Magnesium floats are recommended for use with air-entrained concrete. Floats assist the user in preparing the surface for troweling, or if a float (rough) finish is desired, floating is the final operation.

## MAGNESIUM FLOATS



Part No.	Blade Dimension
H251	84x408mm
H252	84x510mm
H251H	Replacement Handle

### Features

- Cast from the finest magnesium
- Handle is secured with torque pad screws that will not back out
- Designed with just the right broken-in shape
- Cast construction allows more knuckle clearance
- Placement of the handle gives the float perfect balance

## WOOD FLOATS



Part No.	Blade Dimension
H801	112x300mm
H802	112x380mm
H804	50x450mm
H824	65x600mm

### Features

- Made from clear, seasoned wood
- Primarily used for leveling and smoothing concrete prior to final finish

## STEEL FLOATS



Part No.	Blade Dimension
H219S	150x380mm
H209S	160x210mm
H229S	290x100mm

S=Stainless Steel

# CONCRETE EDGERS



Edgers are used to produce a radius at the edge of a concrete slab. This helps prevent the edge from chipping off. Special designed handle provides a soft feel, reduces fatigue, and offers excellent durability.

## Features

- Sturdy steel mounting
- Used to produce a radius at the edge of a concrete slab to help prevent the edge from chipping off
- Has a blade of stainless steel
- Special designed handle provides a soft feel, reduces fatigue, and offers excellent durability

## EDGERS



Part No.	Radius	Width	Length	Height
H401S	5mm	75mm	140mm	12mm
H402S	6mm	75mm	140mm	12mm
H403S	10mm	75mm	140mm	19mm
H406S	6mm	100mm	150mm	14mm
H408S	19mm	75mm	140mm	19mm
Larger size for kerb and gutter work etc.				
H700S	12mm	150mm		
H701S	25mm	150mm		
H702S	12mm	112mm		
H703S	25mm	112mm		
H706S	10mm	105mm		
H708S	20mm	140mm		
H712S	13mm	102mm	Lip 19mm	

S=Stainless Steel

## 45 DEGREE BEVEL EDGERS



Part No.	Description
H413S	45 degree 10mm wide 25mm bevel
H414S	45 degree 125mm wide 25mm bevel

S=Stainless Steel

## VEE JOINTER



Used to form 'dummy' joints in concrete paving. The joint in the concrete reduces the thickness of the paving and if cracking occurs, the crack should be at the line of the 'dummy' joint. The depth of the 'dummy' joint should be 1/5 of the slab thickness. The tools are formed from long wearing steel and special designed handles, which are resilient comfort grips which reduce fatigue.

### VEE JOINTER



Part No.	Blade Width	Blade Depth
H301S	75mm	10mm
H302S	150mm	12mm
H304S	75mm	19mm
H306S	75mm	32mm
H312S	150mm	20mm

S=Stainless Steel

### CASTING TOOL



Part No.	Description
H11A	Jointer Casting Tools 150x75mm D10
H13B	Jointer Casting Tools 150x75mm D12
H18E	Casting Groover Tools 200x75mm Depth 25mm
H19G	Casting Tools - Non Slip Groover

## ADHESIVE SPREADERS



These trowels have 10mm square tooth for applications requiring a thick bed of adhesive such as quarry tiles and 6mm saw tooth for areas where less adhesive is required.

Special designed handle provides a soft feel, reduces fatigue, and offers excellent durability

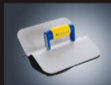


Part No.	Description
FP1QTF	6 mm saw tooth
FP1QTF2	10 mm square tooth

## KERB & GUTTER PROFILE TROWELS



The steel blade is shaped to finish the coving in kerb and gutter. Special designed handle provides a soft feel, reduces fatigue, and offers excellent durability



Part No.	Description
HOKGT	Finish 150mm kerb with 38mm splay & give a 25mm radius to the curb nosing & gutter coving
HOKGCT	Finish gutter crossing with 40mm lip
HOKGC	Finish the coving in kerb & gutter with 25mm radius

## SCREED



"Clamp on" style handle fixed with level bubble, which may be reversed to the working face for second use. Fitted with end plugs and powder coated for ease of clean up.

### CLAMP HANDLE SCREED



Part No.	Length	Part No.	Length
SC12	1200mm	SC30	3000mm
SC15	1500mm	SC36	3600mm
SC18	1800mm	SC42	4200mm
SC21	2100mm	SC45	4500mm
SC24	2400mm	Sc48	4800mm
SC27	2700mm		

## LIGHTWEIGHT ALUMINIUM STRAIGHT EDGE



Lightweight accurate straight edge, uses include ruling cement render, tiling and as a general construction straight edge. Fitted with end plugs and powder coated for ease of clean up, or in mill finish.



Part No. Mill Finish (Plain)	Part No. Powder Coated (Yellow)	Length
SE12P	SE12	1200mm
SE15P	SE15	1500mm
SE18P	SE18	1800mm
SE21P	SE21	2100mm
SE24P	SE24	2400mm
SE27P	SE27	2700mm
SE30P	SE30	3000mm
SE36P	SE36	3600mm

## FLOOR SCRAPER



Long handle scrapers feature replaceable hardened steel blades and durable construction. Choose a scraper to suit your application.



Part No.	Description
H-LHS	190 mm wide blade
H-LHSB7	190 mm spare blade
H-FS6	150 mm wide blade
H-FS6	150 mm spare blade
H-FS	355 mm wide blade
H-FSB14	355 mm spare blade

## LIGHTWEIGHT FINISHING BROOMS



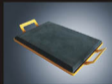
Hair and fibre bristle timber stock, the brooms use a quality hair and fibre bristle.



Part No.	Length	Features
H-1572	600mm	Fitted with fixed bracket
H-1573	750mm	Fitted with fixed bracket
H-1574	900mm	Fitted with fixed bracket
H-1974	900mm	Fitted with 360 deg. adjustable bracket

## KNEEL BOARD

Part No.
H110209



# ALUMINIUM BULLFLOATS



Bullfloats are used by concrete finishers to float large areas of concrete. Handle sections, either 2m H588 or telescopic H076 extends from 2.4m to 4.8m in length, can be joined together so that a finisher can float a slab well out of reach.



## Features

- Aluminum blade
- Has a double rib construction for added strength
- Long wearing and properly balanced
- Complete bracket assembly included that accepts any standard threaded handle section

## STEEL FLOATS

Steel floats, used with H076 and H588 handle, for rubbing in dry shakes toppings or stencil pattern concrete.

Part No.	Blade Length
AB6	600mm
AB9	900mm
AB12	1200mm
AB15	1500mm
AB18	1800mm



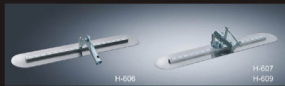
Part No.	Description
H219W	For rubbing in dry shakes toppings
H209W	Sponge foam with perforated aluminium backing plate

# CONCRETE SLAB FINISHING



Trowel concrete floors from a standing position. The tubular connection pivots freely to allow the changing angle between the blade and handle to occur. The square end blade allows troweling up against a wall. Used in conjunction with telescopic handle H076 or clip handle H588.

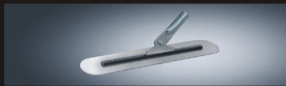
## FRESNO TROWEL



Part No.	Length	Features
H-606	600mm	Tilt locked at desired angle
H-607	600mm	Tilt mechanism bracket fitted
H-609	900mm	Tilt mechanism bracket fitted

Fresno can also lock trowel in different angle for application-it is more flexible and can trowel in different position.

## WALKING TROWEL



Part No.	Length	Features
H-444	440mm	Round ends
H-555	600mm	Round ends
H-556	600mm	One square end
<b>Stainless Steel</b>		
H-P21	2100mm	
H-557	600mm	Round ends
H-558	600mm	One square end

# TELESCOPIC AND CLIP TOGETHER HANDLE



Widely used for many floating and finishing jobs enabling the work to be achieved from a standing position, external from the concrete slab.

Suitable for *Mastool*, Aluminium Bullfloats, Steel Floats, Lightweight Finishing Brooms, Fresno Trowel, Walking Trowel, etc.

## CLIP TOGETHER HANDLE



Part No.	Length	Feature
H588	2000mm	Clip together handle

## TELESCOPIC HANDLE



Part No.	Length	Feature
H076	2400mm - 4800mm	Extends from 2.4m to 4.8m



**Mastool** 

**MASALTA ENGINEERING CO., LTD**

Weisi Road, Bache Industrial Estate, Hefei, China

Tel / 0086-551-4846601 Fax / 0086-4846616 4846626

<http://www.masalta.com.cn>



**Distributed By**

